

Network Digital Signage Solution



Promote

Inform

Educate

Entertain

A Complete Solution for Self-hosted Digital Signage



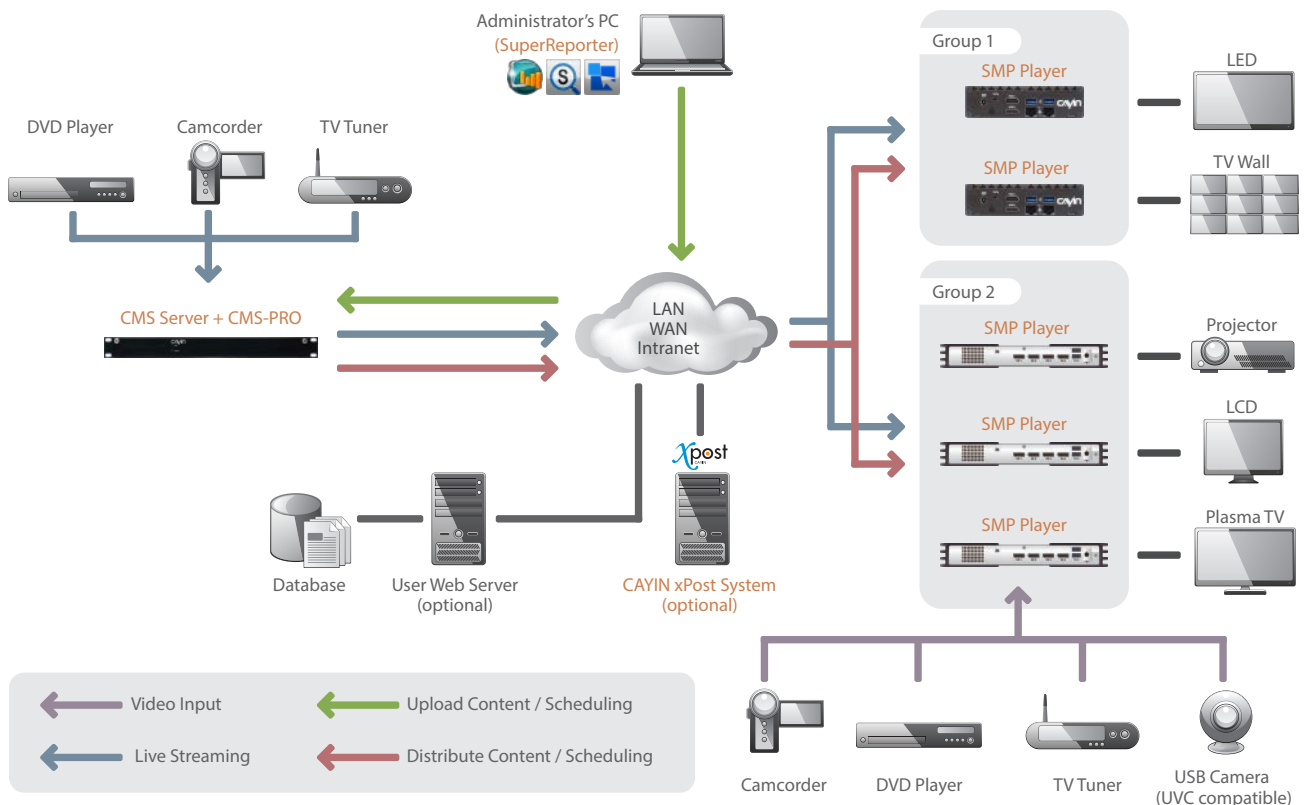
SMP connecting to a screen and a network can work as a standalone player or be deployed in a client-server structure.

Based on the server's role and function, CMS can be installed onsite at headquarters, branches, or offices. It may also be deployed in a cloud-based structure.

The Windows®-based software is installed on an administrator's PC to generate custom playback and system status reports.

The web-based software is installed on a Windows® PC to provide customizable templates for hotel lobbies, meeting rooms, and wayfinding displays.

System Structure





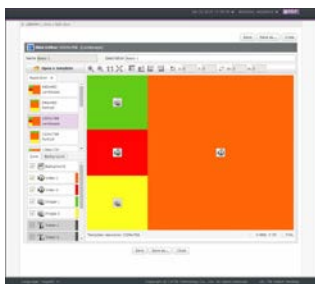
CAYIN Solution Highlights

Media-rich messages

SMP supports a variety of multimedia formats, including 4K UHD video, Flash® animation, HTML5, CSS3, streaming video, weather, social media, and text tickers.

Zone vs fullscreen

You can divide the screen into several zones, each with an independent schedule and settings. You may also create playlists to display multimedia contents as full-screen digital posters.



Easy-to-use template creation

SMP includes a web-based template builder for you to define the size and the position of each zone for multiple displays. Each console provides several built-in templates, and you can always download more from CAYIN's cloud service for free.

Intuitive multi-touch gestures

SMP players support integration with HID compliant touch panels and multi-touch gestures. Users can tap, swipe, or pinch-zoom on the display to navigate through web pages. You may also create custom gestures to accommodate any specific needs.

Flexible scheduling

SMP player offers flexible task scheduling based on one-time, daily, weekly, monthly, or yearly timescales. Location-based scheduling or central scheduling through a CMS server is also available to provide flexibility.

Dual LAN ports and firewall

Some SMP models are equipped with two LAN ports. One port connects to LAN while the other can be used to access the internet. The inbuilt firewall provides protection against security threats coming from open networks.



Large-scale Digital Signage Networks

Powerful central management and long-term reliability





With CAYIN's digital signage solutions, administrators can:

- Assign a role, main server, site server or backup server, to a CMS server to ensure centralized and/or decentralized management, flexible network planning, bandwidth saving, content backup, and non-stop services;
- Create a maximum of five-layer groups on a CMS server to manage all SMP players systematically for content updates and task scheduling;
- Synchronize all SMP players' configurations based on the same model and version (requiring CMS-PRO);
- Monitor the current playlist and screenshots of a maximum of 15 SMP players per page simultaneously (requiring CMS-PRO);
- And trigger emergency events and broadcast priority messages to the public.






CAYIN Product Portfolio

Digital Signage Player

	 SMP-8000/QD	 SMP-6000	 SMP-2200/2210	 SMP-2100
Software	SMP-NEO2 v3.0 and later			
Zone Number	Skin: 11 zones, incl. 2 video zones (single mode) / 4 video zones (distinct mode); HTML: unlimited zones			
Signal Output	Single, clone, extended, distinct modes			
Video Wall	2x2, 4x1, 1x4, 3x1, 1x3, 2x1, 1x2*	1x2, 2x1	2200: 1x2, 2x1 2210: 3x1, 1x3, 2x1, 1x2	1x2, 2x1
Max. Screen Resolution	Single mode: 4096 (width or height) Other modes: 2048 (width or height)	2048 (width or height)	Single/ Clone mode: 4096 (width or height) Other modes: 2048 (width or height)	2048 (width or height)
Max. Video Resolution	1x4K or 4x1080p*	2 x1080p	1x4K or 3x1080p*	2 x1080p
Video Streaming	External UVC capture card or network streaming	Inbuilt S-Video, external UVC capture card, or network streaming	External UVC capture card or network streaming	External UVC capture card or network streaming
Internal Storage	500GB HDD	320GB HDD	30GB SSD	32GB SSD
VGA	-	1	1	-
DVI-D	-	1	-	-
HDMI	-	1	2	2
DisplayPort	4	-	-	-
LAN Port	1	1	2	1
Fan	With Fan	With Fan	Fanless	Fanless
GPS	✓	✓	✓	✓
4G/3G, Wi-Fi	✓	✓	✓	✓
Touch & Gesture	✓	✓	✓	✓

* Please refer to the product document for detailed video wall screen combinations and video specifications.

Content Management Server

	 CMS-60	 CMS-20	 CMS-SE
CPU	2.7G Hz or above	1.8G Hz	Require hardware with 2 GHz dual core processor
Network	1G bps Ethernet	1G bps Ethernet	-
Video Streaming	Supported	Max. 2 Channels	Supported
Content Update	Max. 250 SMP	Max. 20 SMP	10-4000 SMP (per-license basis)
Access Control for Multiple Users	Unlimited user accounts	30 user accounts	Unlimited user accounts

Advanced Management and Application Software

CMS-PRO

As an add-on to CMS, CMS-PRO enhances centralized management by monitoring the status of all SMP players in the same structure.

SuperReporter

The Windows®-based package software can generate reports and diagrams for billing and performance analysis.



xPost

The web-based software can show weather, exchange rates and event information for lobbies, meeting rooms, and wayfinding display.



* Specifications subject to change without notice. Please refer to the user manual of each product.



imaginArt

Representante oficial en España y Portugal

C/ Pujades 273-275 - 08005 - Barcelona (España)

TEL: 93 292 07 70 FAX: 93 217 76 51

imaginart@imaginart.es www.imaginart.es